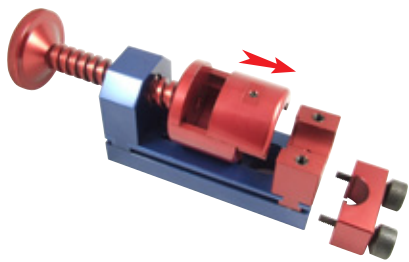
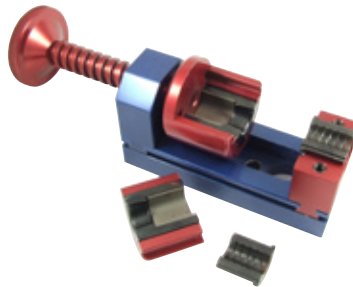


Installation Tool Instructions

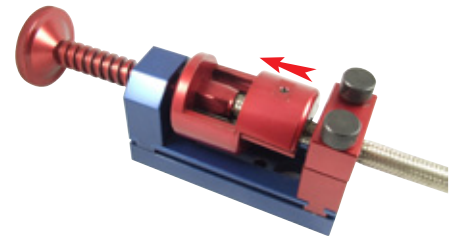
The Proflow installation kit is the only one on the market that actually installs the stainless hose into the socket nut with out the need to push or have your hands damaged by the stainless overbraid. This unit will work on Proflow stainless steel braided hose -4 to -12 in size, but can be used for other applications. Due to the tight tolerances of the stainless braid and the size of the socket nut, it is usually quite difficult to install the socket nut. Traditionally most people use an vise for this job. With the Proflow installation tool this is not an issue. The tool can be used in 2 configurations, to install the stainless hose into the socket nut and also as a fitting vice to assemble the fitting. There is no more pushing and pulling at the hose in a vice. The tool is easy to use and the different components slide on and off the base. A ball bearing is used to locate each component in the correct position.



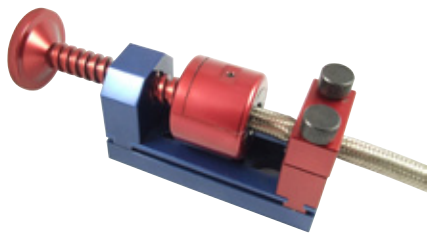
1. To use the tool just unscrew the thumb screws to release the hose clamp assembly. The socket nut holder slides open to place the correct size holder as well as the socket nut.



2. Slide the cover back and slide the socket nut insert into the tool and slide the hose clamp inserts into the holder.



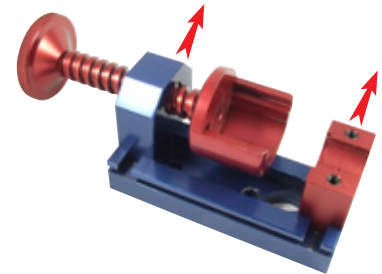
3. Place the socket nut into the tool holder and place the hose into the hose clamp. Put the nut into the nut clamping mechanism and then slip the cover of nut clamping mechanism into position. Place the stainless steel braided hose into hose clamping mechanism and tighten the two hold down screws.



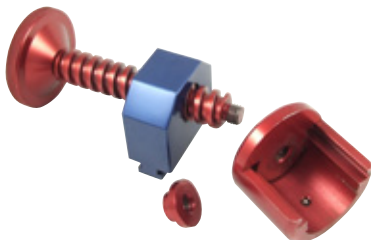
4. Once the cover is closed and the hose is clamped proceed to twist the handwheel continuously until it cannot rotate any further.



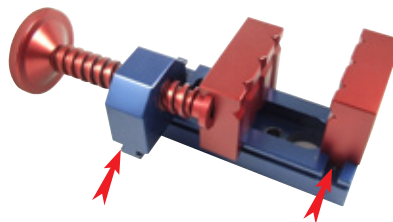
5. Remove the covers and clamp and remove the hose with the socket nut now installed on the hose.



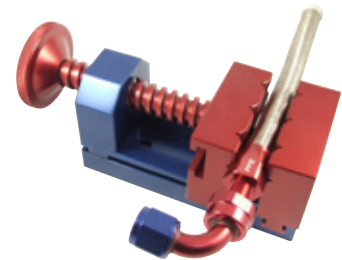
6. To assemble the rest of the components slide the hose clamp and handwheel assembly off the base.



7. Now unscrew the socket nut holder and screw on the vice adaptor.



8. Slide both sections of the vice jaws on to the base of the assembly. Place the vice adaptor into the end of the vice jaws and then slide the handwheel assembly on to the base.



9. The unit is now complete and can hold any style of fitting ready to tighten with an alloy spanner without any damage.